

January 2006

Media Contact: Lesly Baer
 (800) 422-3819
leslybaer@spherion.com

Employee Confidence Index	↓	Macroeconomic Confidence Index	↓	Personal Confidence Index	↓	Job Security	↓	Job Transition	↑
---------------------------	---	--------------------------------	---	---------------------------	---	--------------	---	----------------	---

Florida Employment Report: Despite Drop in Confidence, Workers More Likely to Job-Hop

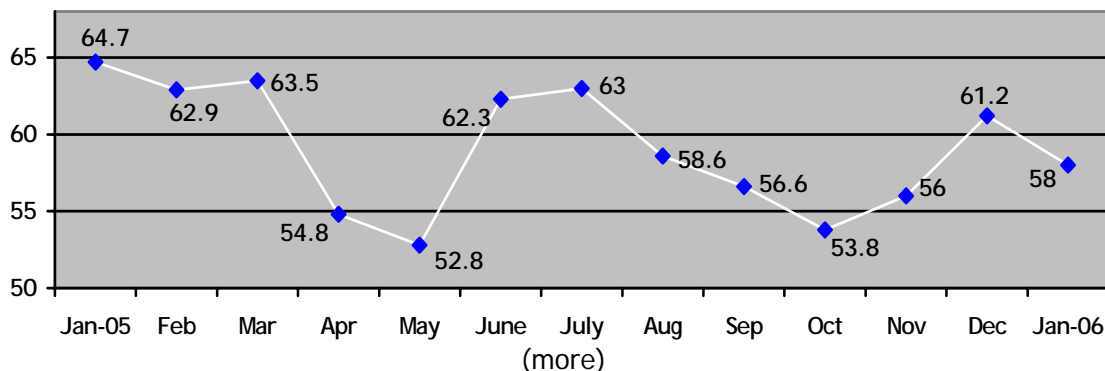
FORT LAUDERDALE, Fla., February 9, 2006 - Florida workers' confidence in the economy and in their personal employment situation ended on a high note in 2005, according to a recent survey conducted by Harris Interactive® on behalf of Spherion Corporation (NYSE:SFN). The overall Florida Employee Confidence Index increased for the second consecutive month from 56 in November to 61.2 in December. Specifically, the Personal Confidence Index, which measures workers' confidence in the future of their employer and in their ability to find a new job, increased to 77.5 in December from 71.8. This level was 9.2 points higher than in December 2004.

While more workers were confident in their personal employment situation, macroeconomic optimism also increased, as fewer workers were concerned about the strength of the economy for the second straight month. In addition, the Personal Confidence Index nearly mirrored the level seen in December 2004. *For detailed information on the calculation of the Employee Confidence Index and its subscale measurements, please see the "About the Spherion® Employment Report" section below.*

"The improving job market, coupled with Florida's historically low unemployment rate, has positioned this state as a very attractive place to live and work," said Matt Shore, regional managing director of Florida for Spherion Professional Services. "As baby boomers retire and the number of skilled workers left to replace them tightens, employers are going to have to strive to attract and retain their top performers by paying more attention to work/life balance issues and adding onto their lists of benefits currently offered. Going into 2006, hiring demand for workers in manufacturing, logistics, and the accounting and finance industry remains poised for strong growth."

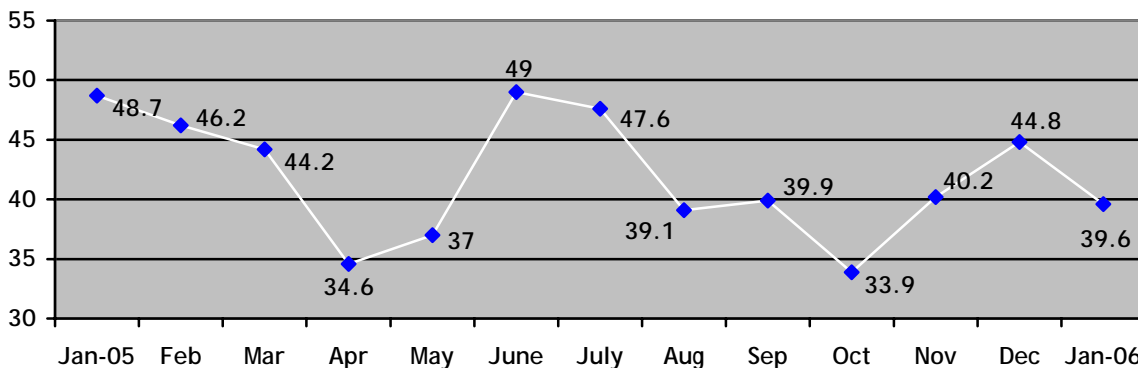
Employee Confidence Index: The overall Florida Employee Confidence Index was 58 in January, a decrease of 3.2 points from December and 6.7 points from a year ago. The Index, which measures adult workers' confidence in their personal employment situation and the macroeconomic environment, decreased because more workers were concerned about the economy and in the future of their current employer.

Employee Confidence Index



Macroeconomic Confidence Index: The Florida Macroeconomic Index was 39.6 in January, decreasing 5.2 points from December. This Index is down 9.1 points from a year ago.

Macroeconomic Confidence Index



Note: The data below was used to calculate the Macroeconomic Confidence Index. For the following, respondents were asked to select a point on a scale of 1 to 5 (where a "1" indicates a weak economy or fewer jobs available while a "5" indicates a stronger economy or more jobs available) that best represents their opinions.

- **Percentage of Workers Who Believe More Jobs Are Available Decreases:** 23 percent of adult workers in Florida believe that more jobs are available, down three percentage points from the previous month.

Job Availability

<u>January 2006</u>		<u>December 2005</u>	
More Jobs:	23%	More Jobs:	26%
Neutral:	36%	Neutral:	42%
Fewer Jobs:	41%	Fewer Jobs:	32%

- **Fewer Florida Workers Believe the Economy is Getting Stronger:** 17 percent of adult Florida workers believe the economy is getting stronger, down 10 percentage points from December.

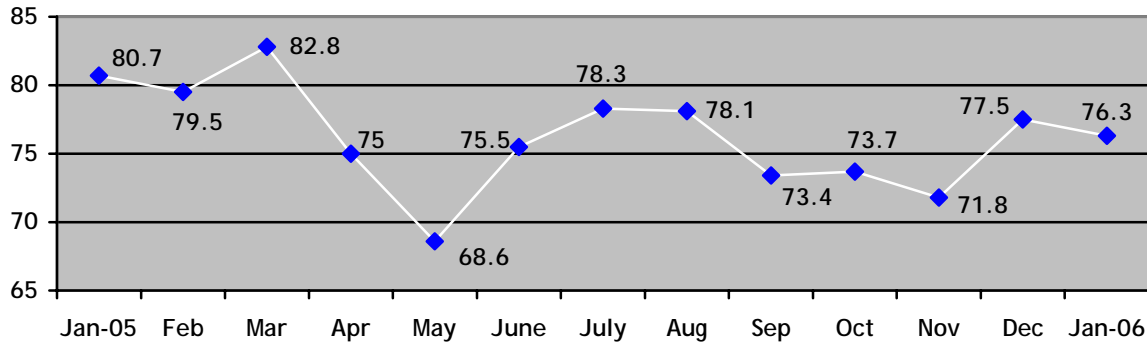
Strength of Economy

<u>January 2006</u>		<u>December 2005</u>	
Getting stronger:	17%	Getting stronger:	27%
Staying the same:	42%	Staying the same:	32%
Getting weaker:	41%	Getting weaker:	41%

(more)

Personal Confidence Index: The Florida Personal Confidence Index was 76.3 in January, down 1.2 points from December, as the percentage of workers reporting confidence in the future of their employer decreased. The Index is 4.4 points lower than one year ago.

Personal Confidence Index



Note: The data below was used to calculate the Personal Confidence Index. For the following, respondents were asked to select a point on a scale of 1 to 5 (where a "1" indicates no confidence in either one's ability to find a job or no confidence in the future of one's employer, while a "5" indicates a lot of confidence in one's ability to find a job or the future of one's employer) that best represents their opinions.

- **Fewer Workers Confident in the Future of Their Employer:** 58 percent of adult workers in Florida are confident in the future of their employer, a decrease of 17 percentage points from the previous month.

Confidence in Future of Current Employer

<u>January 2006</u>		<u>December 2005</u>	
Confident:	58%	Confident:	75%
Neutral:	32%	Neutral:	14%
Not Confident:	10%	Not Confident:	11%

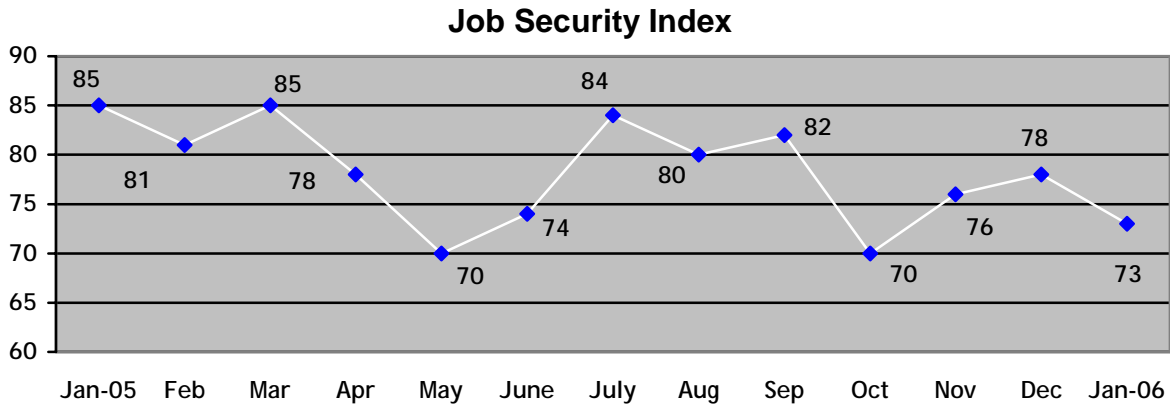
- **More Workers in Florida Confident in Their Ability to Find a New Job:** 68 percent of adult workers in Florida have confidence in their own ability to find a job, an increase of eight percentage points from December.

Own Ability to Find New Job

<u>January 2006</u>		<u>December 2005</u>	
Confident:	68%	Confident:	60%
Neutral:	23%	Neutral:	27%
Not Confident:	10%	Not Confident:	14%

(more)

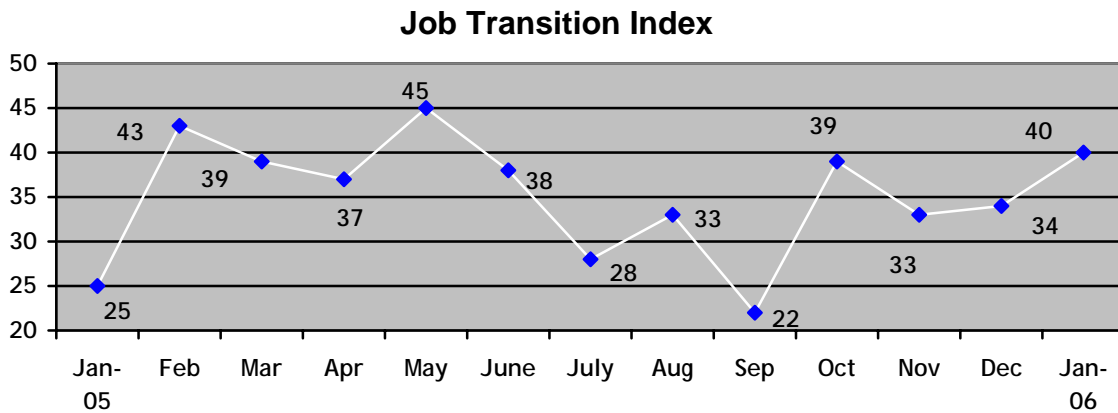
Job Security Index: 73 percent of adult workers feel that it is unlikely that they will lose their jobs in the next year, decreasing from 78 percent in December. The Index is 12 percentage points lower than a year ago.



Likelihood of losing job or job elimination in next 12 months

<u>January 2006</u>		<u>December 2005</u>	
Likely:	12%	Likely:	5%
Neither unlikely nor likely:	15%	Neither unlikely nor likely:	17%
Unlikely:	73%	Unlikely:	78%

Job Transition Index: Increasing for the third consecutive month, 40 percent of working adults in Florida said they are likely to look for a new job in the next 12 months, compared to 34 percent in December. This level is 15 percentage points higher than one year ago.



Likelihood of looking for new job in next 12 months

<u>January 2006</u>		<u>December 2005</u>	
Likely:	40%	Likely:	34%
Neither unlikely nor likely:	12%	Neither unlikely nor likely:	9%
Unlikely:	48%	Unlikely:	57%

(more)

About the Spherion Employment Report

As part of the Spherion® Emerging Workforce® Series of employment surveys, the monthly Spherion Employment Report provides a snapshot of the latest workforce trends across the country and is issued in conjunction with state and national labor market releases. Three key indices are measured: the Spherion Job Security Index, which captures how likely respondents think it is that they will lose their job or that their job will be eliminated in the next 12 months; the Spherion Job Transition Index, which captures how likely respondents are to look for a new job in the next 12 months and the Employee Confidence Index that measures employees' overall confidence in the economy, their employer and their ability to find other employment. The Employee Confidence Index is calculated from the results of four components that reflect these aspects of employee confidence. For each component item a 'score' is calculated by taking the difference of the percentage of positive responses and the percentage of negative responses. These four scores are then averaged to indicate an overall level of employee confidence and is scaled from 0 (no confidence) to 100 (complete confidence). A reading above 50 indicates a positive confidence level.

Methodology

The January 2006 Spherion Employment Report is based on data from the Harris Interactive® online survey conducted monthly on behalf of Spherion Corporation. A U.S. sample of 3,194 employed adults, aged 18 years and older, of whom 170 are employed in Florida (for December 2005 n=124), was interviewed in a series of two polls conducted between January 3-5 and January 10-12, 2006. Figures for age, sex, race/ethnicity, income, education and region were weighted where necessary to bring them into line with their actual proportions in the population. Propensity score weighting adjusted for respondents' propensity to be online. In theory, with probability samples of this size, one can say with 95 percent certainty that the results for the overall sample have a sampling error of plus or minus 2 percentage points. Sampling error for the Florida sample results is plus or minus 9 percentage points of what it would be if the entire New York employed adult population had been polled with complete accuracy. This online sample is not a probability sample.

About Spherion

Spherion Corporation is a leader in the staffing industry in North America, providing value-added staffing, recruiting and workforce solutions. Spherion has helped companies improve their bottom line by efficiently planning, acquiring and optimizing talent since 1946. To learn more, visit www.spherion.com.

About Harris Interactive®

Harris Interactive Inc. (www.harrisinteractive.com), based in Rochester, New York, is the 13th largest and the fastest-growing market research firm in the world, most widely known for *The Harris Poll*® and for its pioneering leadership in the online market research industry. Long recognized by its clients for delivering insights that enable confident business decisions, the Company blends the science of innovative research with the art of strategic consulting to deliver knowledge that leads to measurable and enduring value.

Harris Interactive serves clients worldwide through its United States, Europe (www.harrisinteractive.com/europe) and Asia offices, its wholly-owned subsidiary Novatris in Paris, France (www.novatris.com), and through an independent global network of affiliate market research companies.
EOE M/F/D/V

To become a member of the Harris Poll OnlineSM and be invited to participate in future online surveys, go to www.harrispollonline.com.

###