

Employment Report

FLORIDA

spherion

May 2006

Media Contact: Lesly Baer
(800) 422-3819
leslybaer@spherion.com

Florida Employment Report: Employee Confidence Index Rebounds in May

- o *More workers likely to search for a new job*
- o *Majority of workers remain confident in their ability to find a new job*
- o *Percentage of workers optimistic about the number of jobs available increases*

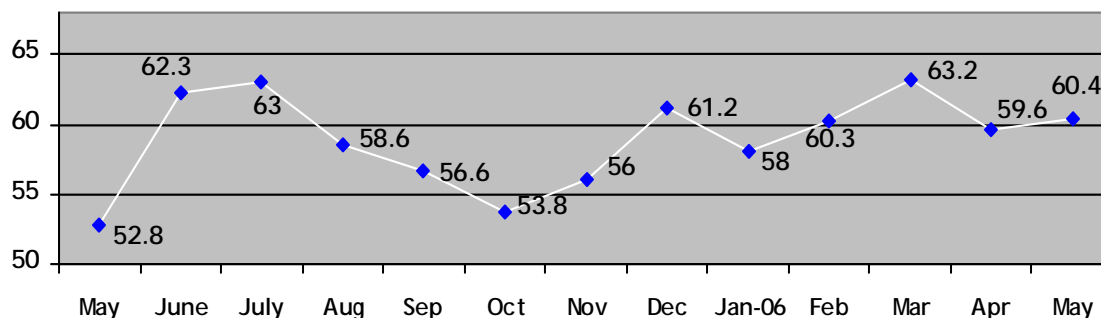
FORT LAUDERDALE, Fla., June 16, 2006 - The Florida Employee Confidence Index rebounded 0.8 points to 60.4 in May, according to a recent survey conducted by Harris Interactive® on behalf of Spherion Corporation (NYSE:SFN). Overall confidence may have increased primarily because more workers were optimistic about the job market.

In addition, nearly four in 10 (36 percent) workers are likely to search for a new job in the next 12 months, compared to 27 percent in April. *For detailed information on the calculation of the Employee Confidence Index and its subscale measurements, please see the "About the Spherion Employment Report" section below.*

"Employees are feeling more confident about the job market as hiring continues to pickup," said Joelly Faber, practice director of Florida for Spherion Professional Services. "As our report indicates, nearly four in 10 workers are likely to search for a new position in the next year. A strong job market is a solid harbinger for increased job searching among those who are already employed. As a result, forward-looking employers are revamping their recruiting and retention efforts to accommodate today's worker by offering higher salaries, presenting counter offers, sign-on bonuses and more attractive relocation packages for out-of-state hires. Employers in finance, technical and service industries are having the most challenging time recruiting talent and have been forced to reevaluate their retention efforts to retain top talent."

Employee Confidence Index: The overall Florida Employee Confidence Index was 60.4 in May, up 0.8 points from April and rising 7.6 points from May 2005. The Index, which measures adult workers' confidence in their personal employment situation and the macroeconomic environment, may have increased as more workers were optimistic about availability of jobs and confident in their ability to find a new job.

Employee Confidence Index



(more)

May Employment Report Results

		<u>Florida Workers</u>			<u>U.S. Workers</u>			
		<i>May 2006</i>	<i>April 2006</i>	<i>% Change</i>		<i>May 2006</i>	<i>April 2006</i>	<i>% Change</i>
Economy	Getting stronger	22%	22%	0%		23%	23%	0%
	Staying same	41%	39%	+2%		34%	34%	0%
	Getting weaker	38%	39%	-1%		43%	43%	0%
Job Availability	More jobs	35%	27%	+8%		27%	26%	+1%
	Same amount	40%	37%	+3%		34%	34%	0%
	Fewer jobs	26%	36%	-10%		39%	41%	-2%
Ability to Find New Job	Confident	57%	56%	+1%		60%	57%	+3%
	Neutral	35%	28%	+7%		27%	28%	-1%
	Not Confident	9%	16%	-7%		13%	15%	-2%
Future of Current Employer	Confident	58%	74%	-16%		66%	65%	+1%
	Neutral	26%	14%	+12%		22%	22%	0%
	Not Confident	16%	12%	+4%		12%	13%	-1%
Job Security	Confident	83%	78%	+5%		78%	76%	+2%
	Neutral	8%	12%	-4%		10%	11%	-1%
	Not Confident	10%	10%	0%		12%	13%	-1%
Look for New Job	Likely	36%	27%	+9%		38%	38%	0%
	Neutral	12%	20%	-8%		9%	11%	-2%
	Not Likely	52%	53%	-1%		53%	51%	+2%

About the Spherion Employment Report

As part of the Spherion® Emerging Workforce® Series of employment surveys, the monthly Spherion Employment Report provides a snapshot of the latest workforce trends across the country and is issued in conjunction with state and national labor market releases. Three key indices are measured: the *Spherion Job Security Index*, which captures how likely respondents think it is that they will lose their job or that their job will be eliminated in the next 12 months; the *Spherion Job Transition Index*, which captures how likely respondents are to look for a new job in the next 12 months and the *Employee Confidence Index* that measures employees' overall confidence in the economy, their employer and their ability to find other employment. The Employee Confidence Index is calculated from the results of four components that reflect these aspects of employee confidence. For each component item a 'score' is calculated by taking the difference of the percentage of positive responses and the percentage of negative responses. These four scores are then averaged to indicate an overall level of employee confidence and is scaled from 0 (no confidence) to 100 (complete confidence). A reading above 50 indicates a positive confidence level.

(more)

Methodology

The May 2006 Spherion Employment Report is based on data from a Harris Interactive® online survey conducted on behalf of Spherion Corporation. A U.S. sample of 2,894 employed adults, aged 18 years and older, of whom 132 are employed in Florida (for April 2006 n=139), was interviewed in a series of two polls conducted between May 3-5 and 9-11, 2006. Figures for age, sex, race/ethnicity, income, education and region were weighted where necessary to bring them into line with their actual proportions in the population. Propensity score weighting adjusted for respondents' propensity to be online.

With pure probability samples, with 100 percent response rates, it is possible to calculate the probability that the sampling error (but not other sources of error) is not greater than some number. With a pure probability sample of 2,894 U.S. employed adults one could say with a 95 percent probability that the overall results have a sampling error of +/- 2 percentage points, and the sampling error for the Florida state sample results is plus or minus 9 percentage points. However, that does not take other sources of error into account. This online survey is not based on a probability sample and therefore no theoretical sampling error can be calculated.

About Spherion

Spherion Corporation (NYSE:SFN) is a leading recruiting and staffing company that provides integrated solutions to meet the evolving needs of companies and job candidates. As an industry pioneer for 60 years, Spherion has screened and placed millions of individuals in temporary, temp-to-hire and full-time jobs. Positions range from administrative and light industrial to a host of professions that include accounting/finance, information technology, engineering, manufacturing, legal, human resources and sales/marketing.

With more than 650 offices in the United States and Canada, Spherion delivers innovative workforce solutions that improve business performance. Spherion provides its services to more than 8,000 customers, from Fortune 500 companies to a wide range of small and mid-size organizations. Employing 375,000 people annually through its network, Spherion is one of North America's largest employers. To learn more, visit www.spherion.com.

About Harris Interactive®

Harris Interactive is the 13th largest and fastest-growing market research firm in the world. The company provides research-driven insights and strategic advice to help its clients make more confident decisions which lead to measurable and enduring improvements in performance. Harris Interactive is widely known for *The Harris Poll*, one of the longest running, independent opinion polls and for pioneering online market research methods. The company has built what could conceivably be the world's largest panel of survey respondents: The Harris Poll Online. Harris Interactive serves clients worldwide through its United States, Europe and Asia offices, its wholly-owned subsidiary Novatris in France and through a global network of independent market research firms. The service bureau, HISB, provides its market research industry clients with mixed-mode data collection, panel development services as well as syndicated and tracking research consultation. More information about Harris Interactive may be obtained at www.harrisinteractive.com.

To become a member of the Harris Poll Online, visit www.harrispollonline.com.

###