

Employment Report

ILLINOIS

spherion

July 2006

Media Contact:

Lesly Baer

(800) 422-3819

leslybaer@spherion.com

Illinois Employment Report: Worker Confidence Slips, But Index Remains Higher Than July 2005

- *Percentage of workers confident in ability to find new job decreases*
- *Percentage of workers likely to look for new job unchanged at 34 percent*
- *Fewer workers believe more jobs are available*

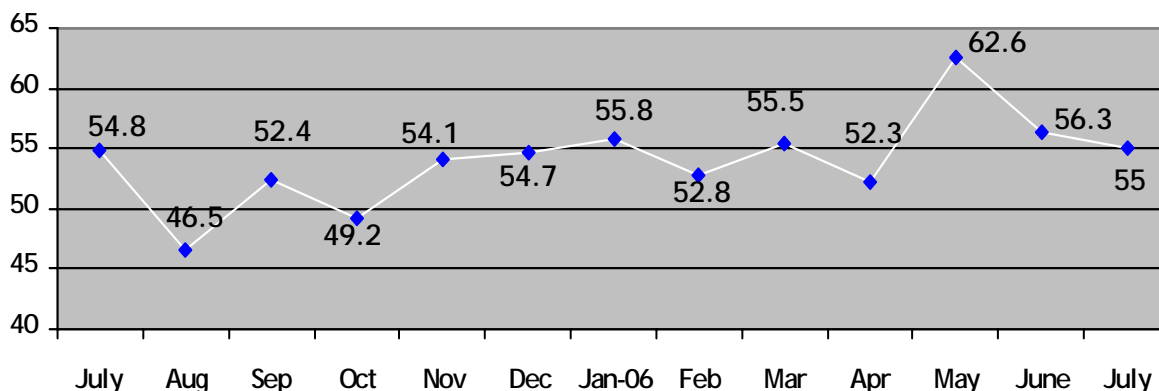
CHICAGO, Ill., August 17, 2006 - The Illinois Employee Confidence Index slipped 1.3 points to 55 in July, but remained 0.2 percentage points higher than July 2005, according to the Illinois Spherion® Employment Report. The survey of working adults in Illinois, conducted by Harris Interactive® on behalf of Spherion Corporation (NYSE:SFN), shows that Illinois worker confidence declined for the second consecutive month as more workers are pessimistic about job availability and less confident in their ability to find a new job.

Specifically, the survey shows that 14 percent of workers believe more jobs are available, compared to 24 percent in the previous month. In addition, 54 percent of workers report confidence in their ability to find a new job, decreasing eight percentage points from June. Despite these concerns, 34 percent of workers indicate that they are likely to look for a new job in the next year, showing no change from June.

"Regardless of the decrease in overall confidence, slightly more workers are confident than this time last year. Workers may be reacting to the job loss the state experienced last month, but I wouldn't say it's a reason to raise a red flag," said Michael Ruter, managing director of Spherion Professional Services in Chicago. "Employers are still adding to their payrolls and trying to keep up with the need for additional talent, especially for .net developers, java programmers and tax specialists."

Employee Confidence Index: The overall Illinois Employee Confidence Index was 55 in July, slipping 1.3 points from June and increasing 0.2 percentage points from July 2005. The Index, which measures adult workers' confidence in their personal employment situation and the macroeconomic environment, decreased as more workers reported doubt in job availability and their ability to find a new job.

Employee Confidence Index



(more)

July Employment Report Results

		<u>Illinois Workers</u>			<u>U.S. Workers</u>		
		<i>June</i>	<i>July</i>	<i>% Point Change</i>	<i>June</i>	<i>July</i>	<i>% Point Change</i>
Economy	Getting stronger	20%	22%	+2%	19%	23%	+ 4%
	Staying same	31%	27%	-4%	38%	33%	-5%
	Getting weaker	49%	51%	+2%	43%	44%	+1%
Job Availability	More jobs	24%	14%	-10%	24%	25%	+1%
	Same amount	28%	44%	+16%	37%	36%	-1%
	Fewer jobs	48%	42%	-6%	39%	38%	-1%
Ability to Find New Job	Confident	62%	54%	-8%	56%	57%	+1%
	Neutral	23%	28%	+5%	29%	28%	-1%
	Not confident	15%	18%	+3%	16%	15%	-1%
Future of Current Employer	Confident	67%	70%	+3%	65%	65%	0%
	Neutral	21%	21%	0%	22%	24%	+2%
	Not confident	12%	9%	-3%	13%	12%	-1%
Likelihood to Lose Job	Likely	13%	15%	+2%	11%	12%	+1%
	Neutral	8%	10%	+2%	11%	9%	-2%
	Not likely	78%	75%	-3%	78%	79%	+1%
Look for New Job	Likely	34%	34%	0%	36%	35%	-1%
	Neutral	10%	7%	-3%	10%	10%	0%
	Not likely	56%	60%	+4%	54%	55%	+1%

About the Spherion Employment Report

As part of the Spherion® Emerging Workforce® Series of employment surveys, the monthly Spherion Employment Report provides a snapshot of the latest workforce trends across the country and is issued in conjunction with state and national labor market releases. Three key indices are measured: the Spherion *Job Security Index*, which captures how likely respondents think it is that they will lose their job or that their job will be eliminated in the next 12 months; the Spherion *Job Transition Index*, which captures how likely respondents are to look for a new job in the next 12 months; and the *Employee Confidence Index*, which measures employees' overall confidence in the economy, the future of their employer, the availability of jobs, and their ability to find other employment. The Employee Confidence Index is based on these four components, with a 'score' calculated for each by taking the difference of the percentage of positive responses and the percentage of negative responses. These four scores are then averaged to indicate an overall level of employee confidence scaled from 0 (no confidence) to 100 (complete confidence). A reading above 50 indicates a positive confidence level.

(more)

Methodology

The July 2006 Spherion® Employment Report is based on data from the Harris Interactive QuickQuerySM online omnibus conducted monthly by Harris Interactive® on behalf of Spherion Corporation. A U.S. sample of 2,836 employed adults aged 18 years and older, of whom 117 are employed in Illinois (for June n=140), was interviewed in a series of two polls conducted between July 5-7 and July 11-13, 2006. Figures for age, sex, race/ethnicity, income, education and region were weighted where necessary to bring them into line with their actual proportions in the population. Propensity score weighting adjusted for respondents' propensity to be online.

With pure probability samples, with 100 percent response rates, it is possible to calculate the probability that the sampling error (but not other sources of error) is not greater than some number. With a pure probability sample of 2,836 U.S. employed adults one could say with a 95 percent probability that the overall results have a sampling error of +/- 2 percentage points, and the sampling error for the Illinois state sample results is plus or minus 9 percentage points. However, that does not take other sources of error into account. This online survey is not based on a probability sample and therefore no theoretical sampling error can be calculated.

About Spherion

Spherion Corporation (NYSE:SFN) is a leading recruiting and staffing company that provides integrated solutions to meet the evolving needs of companies and job candidates. As an industry pioneer for 60 years, Spherion has screened and placed millions of individuals in temporary, temp-to-hire and full-time jobs. Positions range from administrative and light industrial to a host of professions that include accounting/finance, information technology, engineering, manufacturing, legal, human resources and sales/marketing.

With more than 650 offices in the United States and Canada, Spherion delivers innovative workforce solutions that improve business performance. Spherion provides its services to more than 8,000 customers, from Fortune 500 companies to a wide range of small and mid-size organizations. Employing 375,000 people annually through its network, Spherion is one of North America's largest employers. To learn more, visit www.spherion.com.

About Harris Interactive

Harris Interactive is the 12th largest and fastest-growing market research firm in the world. The company provides research-driven insights and strategic advice to help its clients make more confident decisions which lead to measurable and enduring improvements in performance. Harris Interactive is widely known for *The Harris Poll*, one of the longest running, independent opinion polls and for pioneering online market research methods. The company has built what could conceivably be the world's largest panel of survey respondents, the Harris Poll Online. Harris Interactive serves clients worldwide through its United States, Europe and Asia offices, its wholly-owned subsidiary Novatris in France and through a global network of independent market research firms. The service bureau, HISB, provides its market research industry clients with mixed-mode data collection, panel development services as well as syndicated and tracking research consultation. More information about Harris Interactive may be obtained at www.harrisinteractive.com.

To become a member of the Harris Poll Online, visit www.harrispollonline.com.

###