

Employment Report



March 2006

Media Contacts: Lesly Baer
(800) 422-3819
leslybaer@spherion.com

Employee Confidence Index	↓	Macroeconomic Confidence Index	↓	Personal Confidence Index	↓	Job Security	↓	Job Transition	↑
---------------------------	---	--------------------------------	---	---------------------------	---	--------------	---	----------------	---

Texas Employee Confidence Sinks as More Workers Pessimistic about Economy and Personal Prospects

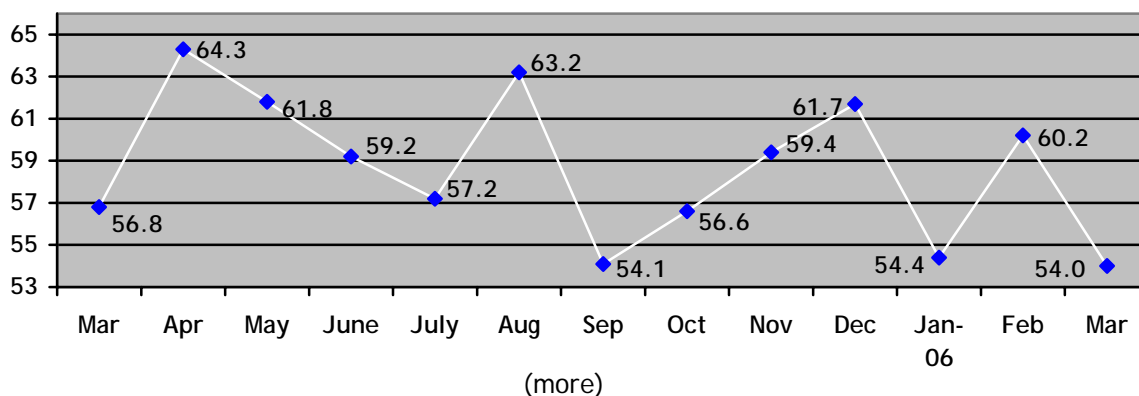
DALLAS, Texas, April 21, 2006 — Despite 23,200 jobs added in March, the Texas Employee Confidence Index dropped to a record low as more workers expressed concerns about the economy and their personal employment situation. The Employee Confidence Index was 54 in March, down 6.2 points from the February, according to the Texas Spherion Employment Report, conducted by Harris Interactive® on behalf of Spherion Corporation (NYSE:SFN). The subscale Macroeconomic Confidence Index slid 7.8 points to 37.1 in March, as 47 percent of workers believe the economy is getting weaker, a 14-percentage-point increase from the prior month.

The subscale Personal Confidence Index declined to 70.9 in March from 75.5 in February, down 1.1 points from a year ago. Sixty-five percent of employed adults in Texas expressed confidence in the future of their employer, a decrease of seven percentage points from February. *For detailed information on the calculation of the Employee Confidence Index and its subscale measurements, please see the "About the Spherion Employment Report" section below.*

"New immigration laws currently being debated could have a major impact on the Texas business community, and those concerns may be rising in our latest survey," said Julie Van Wormer, vice president of Spherion in Texas. "We're also seeing that the hiring process is taking longer as employers are asking for more extensive background checks and drug tests. However, as hiring becomes more drawn out in a tightening job market, employers need to balance their due diligence with the possibility that a lengthy hiring process could cause them to lose good candidates."

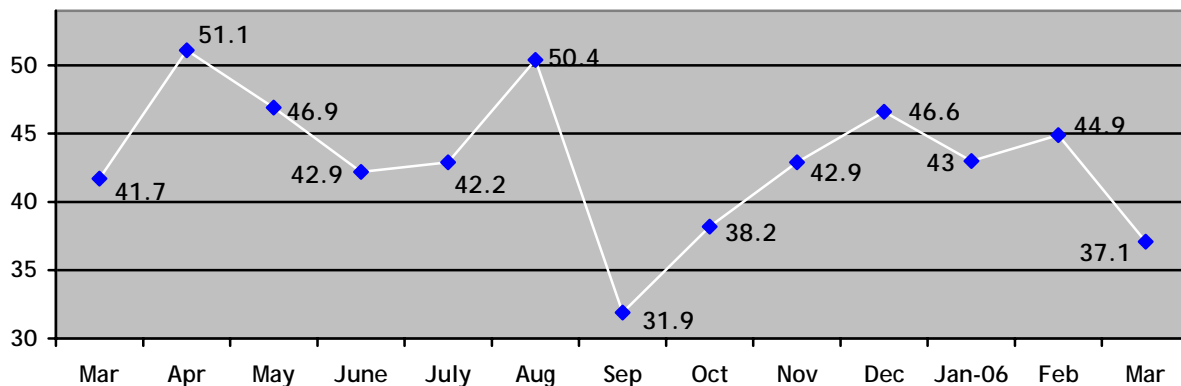
Employee Confidence Index: The overall Texas Employee Confidence Index was 54 in March, down 6.2 points from February and 2.8 points from March 2005. The Index, which measures adult workers' confidence in their personal employment situation and the macroeconomic environment, decreased as more workers had concerns about the economy and their personal employment situation.

Employee Confidence Index



Macroeconomic Confidence Index: The Macroeconomic Index was 37.1 in March, decreasing from 44.9 in February. This decline was a result of more workers having doubts about the availability of jobs and the strength of the economy. The Index is 4.6 points lower than a year ago.

Macroeconomic Confidence Index



Note: The data below was used to calculate the Macroeconomic Confidence Index. For the following, respondents were asked to select a point on a scale of 1 to 5 (where a "1" indicates a weak economy or fewer jobs available while a "5" indicates a stronger economy or more jobs available) that best represents their opinions.

- **Fewer Workers Believe More Jobs Are Available:** 22 percent of adult workers in Texas believe that more jobs are available, compared to 27 percent from the previous month.

Job Availability

<u>March 2006</u>		<u>February 2006</u>	
More Jobs:	22%	More Jobs:	27%
Neutral:	33%	Neutral:	31%
Fewer Jobs	45%	Fewer Jobs:	42%

- **More Workers Believe the Economy is Weakening:** 17 percent of adult Texas workers believe the economy is getting stronger, compared to 28 percent in February.

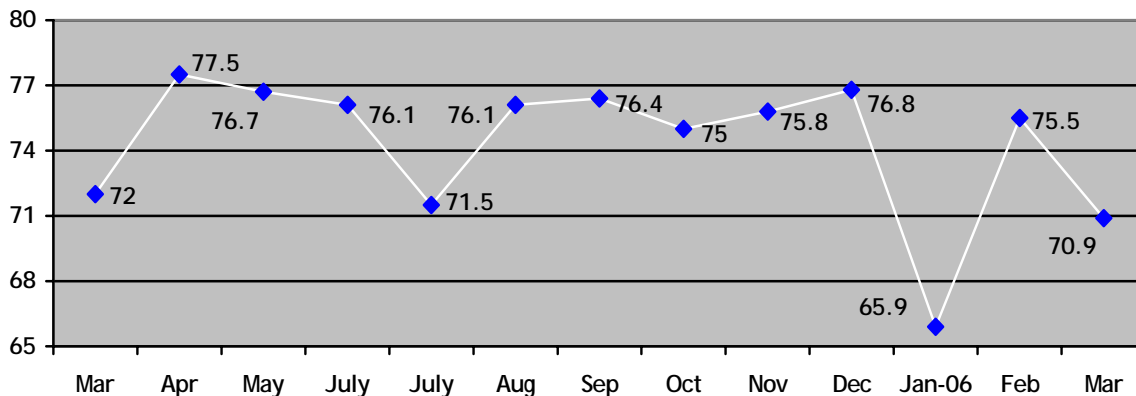
Strength of Economy

<u>March 2006</u>		<u>February 2006</u>	
Getting stronger:	17%	Getting stronger	28%
Staying the same:	36%	Staying the same:	39%
Getting weaker:	47%	Getting weaker:	33%

(more)

Personal Confidence Index: The Texas Personal Confidence Index was 70.9 in March, down 4.6 points from February. The Index is 1.1 points lower than one year ago.

Personal Confidence Index



Note: The data below was used to calculate the Personal Confidence Index. For the following, respondents were asked to select a point on a scale of 1 to 5 (where a "1" indicates no confidence in either one's ability to find a job or no confidence in the future or one's employer, while a "5" indicates a lot of confidence in one's ability to find a job or the future of one's employer) that best represents their opinions.

- **Fewer Workers Confident in Future of Current Employer:** 65 percent of adult workers in Texas are confident in the future of their employer, down seven percentage points from February.

Confidence in Future of Current Employer

<u>March 2006</u>		<u>February 2006</u>	
Confident:	65%	Confident:	72%
Neutral:	18%	Neutral:	20%
Not Confident:	17%	Not Confident:	8%

- **More Workers Confident in Ability to Find a New Job:** 57 percent of adult workers in Texas are confident in their own ability to find a new job, an increase of two percentage points from February.

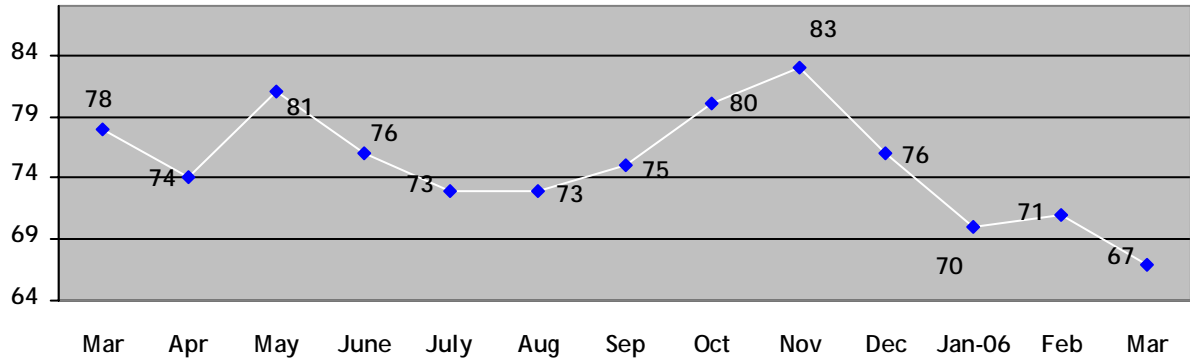
Own Ability to Find New Job

<u>March 2006</u>		<u>February 2006</u>	
Confident:	57%	Confident:	55%
Neutral:	23%	Neutral:	27%
Not Confident:	21%	Not Confident:	18%

(more)

Job Security Index: 67 percent of adult Texas workers feel it is unlikely that they will lose their jobs in the next 12 months, compared to 71 percent from the previous month. The Index is 11 percentage points lower than the level seen in March 2005.

Job Security Index

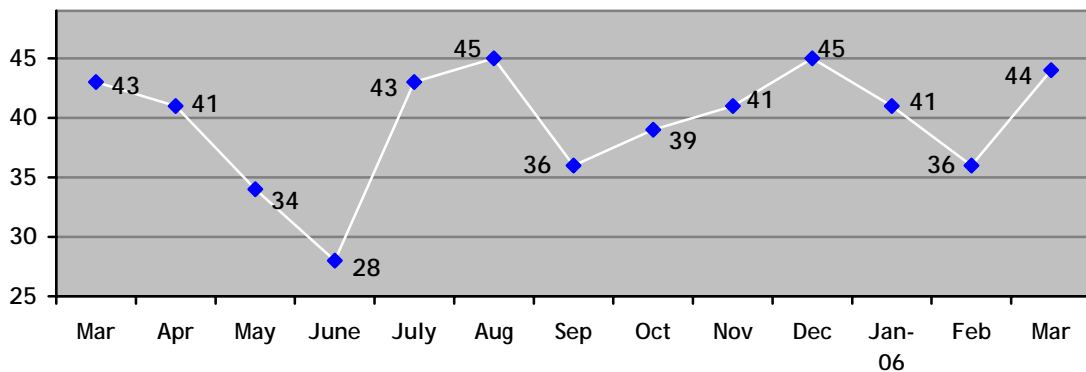


Likelihood of losing job or job elimination in next 12 months

<u>March 2006</u>		<u>February 2006</u>	
Likely:	20%	Likely:	14%
Neither unlikely nor likely:	13%	Neither unlikely nor likely:	16%
Unlikely:	67%	Unlikely:	71%

Job Transition Index: The Texas Job Transition Index was 44 percent in March, up eight percentage points from February. The Index level is virtually unchanged from March 2005.

Job Transition Index



Likelihood of looking for new job in next 12 months

<u>March 2006</u>		<u>February 2006</u>	
Likely:	44%	Likely:	36%
Neither unlikely nor likely:	9%	Neither unlikely nor likely:	8%
Unlikely:	47%	Unlikely:	55%

(more)

About the Spherion Employment Report

As part of the Spherion® Emerging Workforce® Series of employment surveys, the monthly Spherion Employment Report provides a snapshot of the latest workforce trends across the country and is issued in conjunction with state and national labor market releases. Three key indices are measured: the Spherion Job Security Index, which captures how likely respondents think it is that they will lose their job or that their job will be eliminated in the next 12 months; the Spherion Job Transition Index, which captures how likely respondents are to look for a new job in the next 12 months and the Employee Confidence Index that measures employees' overall confidence in the economy, their employer and their ability to find other employment. The Employee Confidence Index is calculated from the results of four components that reflect these aspects of employee confidence. For each component item a 'score' is calculated by taking the difference of the percentage of positive responses and the percentage of negative responses. These four scores are then averaged to indicate an overall level of employee confidence and is scaled from 0 (no confidence) to 100 (complete confidence). A reading above 50 indicates a positive confidence level.

Methodology

The March 2006 Spherion Employment Report is based on data from a Harris Interactive® online survey conducted on behalf of Spherion Corporation. A U.S. sample of 2972 employed adults, aged 18 years and older, of whom 202 are employed in Texas (for February 2005 n=233), was interviewed in a series of two polls conducted between March 8-10 and March 14-16, 2006. Figures for age, sex, race/ethnicity, income, education and region were weighted where necessary to bring them into line with their actual proportions in the population. Propensity score weighting adjusted for respondents' propensity to be online. In theory, with probability samples of this size, one could say with 95 percent certainty that the results for the overall sample have a sampling error of plus or minus 2 percentage points. Sampling error for the Texas sample results is plus or minus 7 percentage points of what they would be if the entire Texas employed adult population had been polled with complete accuracy. This online sample is not a probability sample.

About Spherion

Spherion Corporation is a leader in the staffing industry in North America, providing value-added staffing, recruiting and workforce solutions. Spherion has helped companies improve their bottom line by efficiently planning, acquiring and optimizing talent since 1946. To learn more, visit www.spherion.com.

About Harris Interactive®

Harris Interactive Inc. (www.harrisinteractive.com), based in Rochester, New York, is the 13th largest and the fastest-growing market research firm in the world, most widely known for *The Harris Poll*® and for its pioneering leadership in the online market research industry. Long recognized by its clients for delivering insights that enable confident business decisions, the Company blends the science of innovative research with the art of strategic consulting to deliver knowledge that leads to measurable and enduring value.

Harris Interactive serves clients worldwide through its United States, Europe (www.harrisinteractive.com/europe) and Asia offices, its wholly-owned subsidiary Novatris in Paris, France (www.novatris.com), and through an independent global network of affiliate market research companies.
EOE M/F/D/V

To become a member of the Harris Poll OnlineSM and be invited to participate in future online surveys, go to www.harrispollonline.com.

###